

Gaston County Radiological Emergency Response Plan
for the
McGuire and Catawba Nuclear Stations

Updated: December 2017



CERTIFICATION

Gaston County, NC will use this Plan in combination with the North Carolina Radiological Emergency Response Plan in the event of an emergency at the Duke Energy McGuire Nuclear Station or Catawba Nuclear Station. The undersigned agree to the responsibilities assigned to their organizations in this Plan.

This plan has been written to address a response to a nuclear release incident. Current conditions and or situations may mean that decision makers may have to alter decisions based on guidance reflected in the plans for the safety of personal and residents. Although every effort has been taken to ensure a working plan, unexpected external influences may cause an alternate decision that will better protect the personal and resident when needed.

Therefore decision makers will use this plan as a base for protective actions but have the ability to change as needed if unexpected situations arises that may call for different protective actions to be made.

[electronically signed]

Earl Mathers
County Manager
Gaston County
Date:

[electronically signed]

Thomas Almond, Administrator
Gaston County Emergency Management
Date:

Attachments	
Attachment 1	Authorities, References and Agreements
Attachment 2	Supporting Plans and Their Sources
Attachment 3	Inventory of Emergency Equipment
Also See	

EOC Documents	EOC Staff Checklists
Display	Reactor Cross Section
Annex	Emergency Worker Monitoring & Decon
Checklist	Nuclear / Radiological Incident

I. PURPOSE

- A. To meet the United States [Nuclear Regulatory Commission Regulation #0654](#) Revision 4, dated July, 2003, which requires that local governments develop an emergency response plan for all areas within 10 miles of a fixed nuclear facility. A portion of Gaston County lies within the 10-mile radius of Duke Energy Company's McGuire and Catawba Nuclear Power Stations.
- B. To prescribe those actions to be taken by Gaston County and threatened municipalities to protect the general public who may be affected by radiation exposure and environmental contamination resulting from an incident at either the McGuire or Catawba Nuclear Power Stations.
- C. To define the [roles of the County and local political subdivisions](#) prior to, during, and after the need to evacuate any portion of this County.
- D. To provide for the coordination, direction, control, and continuity of governments in this and similar disaster situations.
- E. To provide the basis for preparation of detailed emergency operating procedures and training by the various public and private disaster support agencies within and outside this County.

II. CONCEPT OF OPERATIONS

- A. In the event of an emergency at either the McGuire or Catawba Nuclear Power Stations notify, among others, the Gaston County Warning Point located in the Communications Center at the Gaston County [Emergency Operations Center](#) in Gastonia, N.C. This notification will include the class of the emergency, other amplifying information, and recommendations for protective actions.
- B. If the emergency poses a radiation threat to the surrounding community, local government will immediately take appropriate actions to inform the residents in the threatened areas of the actions they should take for their own safety. The population may be alerted by fixed and mobile siren systems, public address announcements, door-to-door alerting, [Emergency Alert System](#) (EAS) radio and television announcements, and any other communication systems such as the National Weather Service (NWS) that are appropriate to the situation. (See [Annex E - State Plan - EAS Procedures](#).)
- C. Local government and emergency service organizations must plan for and be prepared to direct all off-site emergency operations until assistance can be provided from the State Emergency Response Team (SERT).
- D. The State assumes direction and control authority in accordance with the following:
 - **Option A**
At the request of the County or counties concerned SERT assumes direction and control authority effective at the specified date, time and location; **or**
 - **Option B**
A State of Disaster has been appropriately declared, SERT has been established and assumes direction and

control authority effective at the specified date, time and location. (See [State Plan - Part 1](#), Section VIII, Figure 3 for message example.)

- E. The Gaston County [Emergency Management Administrator](#), will be in charge of planning, organizing, and coordinating the general response conducted by Gaston County government.
- F. Gaston County is capable of continuous (24-hour) operations for a protracted period.
- G. Within their respective jurisdiction, the head or supervisor of each county government department will be responsible for assuring continuity of operations and resources.
- H. Emergency communications links among state, local, and federal agencies, and between Duke Energy Company and state and county governments are staffed 24 hours a day. (See [Emergency Communications](#), Section VI.)
- I. In summary, this Plan contains emergency procedures to be implemented throughout the Emergency Planning Zone (EPZ). In developing the emergency response concept of operations, two time frames were considered.
 - 1. When an emergency condition exists at the facility but is not serious enough to warrant a declaration of a State of Disaster by the Governor of North Carolina, the County directs the actions of County emergency response resources.
 - 2. When the emergency condition has escalated to such a level that the Governor declares a State of Disaster, the State assumes responsibility for direction and control of all off-site emergency operations. Where available and operationally effective, such direction and control will be exercised through the Gaston County Chain of Command.

III. ORGANIZATION AND RESPONSIBILITIES

This section assigns responsibility for County emergency response organizations to inform, protect, and evacuate, if necessary, in the event an incident at either the Catawba or McGuire Site poses a threat to any portion of Gaston County. It also establishes the responsibilities of other organizations to provide personnel, equipment, and expertise in a supporting role. (See [Organizational Chart](#), Figure 1.)

- A. The overall responsibility for decision-making within Gaston County rests with the Gaston County Commissioners, who have the ultimate responsibility for the protection of life and property within this County. Gaston County will provide the basic planning, guidance, and [evacuation](#) support, as required, to the local township and municipal authorities.
- B. Any county or municipal agency or department may be tasked with an emergency mission. The supervisor of each department is responsible for the accomplishment of an assigned task or function. A number of the primary functions are listed in the following paragraphs. In addition, these departments are assigned the following general tasks:
 - 1. Provide personnel, equipment, and facilities on a 24-hour basis.
 - 2. Plan and provide for the safety of employees and protection of public property in the event of an emergency.
 - 3. Coordinate actions with the Gaston County Emergency Management Administrator and with departments having related tasks.
 - 4. As appropriate, provide personnel to staff the [Gaston County EOC](#) and a liaison to SERT.
 - 5. Provide for record keeping and documentation of the emergency and actions taken.

6. Prepare damage and loss survey reports.

C. GASTON COUNTY EMERGENCY MANAGEMENT ADMINISTRATOR, OR ALTERNATE OR EOC MANAGER

1. Recommend the activation of the County EOC in an appropriate mode and maintain it on a 24-hour basis, as needed.
2. Develop contingency plans that provide for a rapid and coordinated response of emergency services and coordinate protective response operations.
3. Coordinate the disposition of emergency workers and resources.
4. Coordinate all initial and [back-up warning and notification](#) activities.
5. Serve as advisor to the Board of County Commissioners and provide situation reports and other information including any recommendations relative to the State on the activation of SERT.
6. Coordinate [training](#) of local emergency workers.
7. Coordinate support to the emergency workers in the field.
8. Provide and coordinate [communications](#) with the State and supporting elements.
9. Establish communications with the [National Weather Service at Greer S.C.](#) to obtain meteorological information.
10. Develop [priority and key alert lists](#).

D. GASTON COUNTY POLICE CHIEF

1. Coordinate all necessary law enforcement and traffic control measures.
2. Provide necessary and timely support to the Gaston County Commissioners during initial onset of the emergency.
3. When necessary, establish and maintain communication links between either the McGuire or Catawba Station and the County EOC and provide [communications support](#) to the County EOC.
4. Provide necessary traffic control measures in support of [evacuation](#) and effect security procedures of restricted areas.
5. Establish roadblocks to reroute traffic and prevent unauthorized entry into contaminated or restricted areas.
6. Maintain a log of all authorized/unauthorized persons and vehicles entering and leaving a designated secure zone subsequent to evacuation.
7. Direct contaminated persons and vehicles to designated decontamination stations and provide escorts, if required.
8. Coordinate Stanley and Mount Holly Police support in evacuating the public, roadblocks and traffic control measures.

9. During a State of Disaster, declared by the Governor, provide the State Highway Patrol with local law enforcement resources and assistance.

E. GASTON COUNTY SHERIFF

1. Coordinate all necessary notification and escort measures.
2. Provide necessary and timely support to the Gaston County Commissioners throughout the emergency.
3. When necessary, establish and maintain [communications](#) links between the County EOC and the site.
4. Assist with necessary traffic control measures in support of [evacuation](#). Report traffic problems to the County EOC.
5. Coordinate Stanley and Mount Holly Police support in [warning](#) the public.
6. Direct contaminated persons and vehicles to designated decontamination stations and provide escorts, if required.
7. During a State of Disaster, declared by the Governor, provide the State Highway Patrol with local law enforcement resources and assistance.

F. GASTON COUNTY EMERGENCY SERVICES (FIRE SERVICE, RESCUE SQUADS, AND EMERGENCY MEDICAL SERVICES)

1. Gaston Emergency Medical Services (GEMS)
 - a. Provide specialized training programs for medical support personnel who may be called upon to care for off-site victims.
 - b. Provide emergency communications capability for medical facilities and ambulances, and back-up communications for emergency workers.
 - c. Coordinate emergency medical services at radiation incident sites and shelters.
 - d. Provide technical information on available emergency medical personnel.
 - e. Provide radiation safety training to emergency medical personnel through existing emergency medical training programs.
 - f. Assist in obtaining ambulances and rescue resources.
 - g. Support decontamination operations at Reception Center and Emergency Worker Decon Station.
 - h. Provide and/or support rescue operations.
2. Gaston County Rescue Squad Captains
 - a. Support emergency medical services at radiation incident sites and shelters.
 - b. Assist in obtaining rescue resources.
 - c. Assist the lead law enforcement agency as needed to protect lives and property.
3. Gaston County Fire Marshal
 - a. Provide support and assistance to the Gaston County Police Department in the [evacuation](#) and the Sheriff Department in [warning](#) of people within the designated zones.
 - b. Provide equipment and personnel for decontamination operations, including earth moving and wash

- downs.
 - c. Provide local area communications support.
 - d. Provide vehicles for movement of equipment and personnel when directed by the County Emergency Management Administrator or EOC Manager.
 - e. Coordinate the removal of radiologically contaminated material.
4. Gaston County Fire Department Chiefs
- a. Provide support equipment and personnel for decontamination operations, including earth moving and wash down as needed.
 - b. Provide local area communications support.
 - c. Support law enforcement in warning and evacuating persons in threatened or contaminated zones as needed.

G. CHAIRMAN, BOARD OF COUNTY COMMISSIONERS

1. [Assume command](#) of emergency response actions within the county in close coordination with other units of government

H. GASTON COUNTY MANAGER

1. Provide administrative support, supplies, and equipment to maintain operations within the [Gaston County EOC](#).

I. GASTON COUNTY SOCIAL SERVICES DIRECTOR

1. Assist the Red Cross in [shelter operations](#) at the [designated shelters](#).
2. Provide personnel for the operations of designated shelters.
3. Provide clothing for evacuees as available
4. Provide support personnel to monitor evacuees at designated shelters.

J. GASTON COUNTY COMMUNICATIONS DIRECTOR

1. Coordinate communications within the [EOC](#).
2. Maintain [key warning and alert notification](#) list and procedures.
3. Coordinate communications between personnel in the field and the County EOC.
4. Maintain a weather data terminal capable of obtaining [current meteorological information and predictions](#) in the vicinity of either the McGuire or Catawba Stations from the National Weather Service or other reliable weather service.
5. Provide support communications to the emergency workers in the field as needed.

K. GASTON COUNTY SOLID WASTE SUPERVISOR (COUNTY ENGINEER)

1. Provide personnel and equipment to assist in decontamination of equipment, roads, and structures.

2. Support transportation of needed supplies and equipment.
3. Support the removal of radiologically contaminated material.

L. GASTON COUNTY COOPERATIVE EXTENSION AGENCY

1. Assist the U.S. Department of Agriculture (County Food and Agricultural Council) in locating and reporting sources of uncontaminated feed for livestock in evacuated areas, if necessary.
2. Assist in assessing the impact of contamination of livestock, produce and processed food, as needed.
3. Provide an interface with the State Cooperative Extension Service representative to the Joint Information Center to assist in informing local producers and users of agricultural commodities of the results of the incident and the protective action recommendations made by the N.C. Radiation Protection Section.
4. Perform a liaison function between local agricultural commodity producers and State and Federal agencies to serve as a clearing-house for information related to the emergency.
5. Provide personnel to act as guides for N.C. Department of Agriculture sampling teams, and for other sampling teams as necessary.

M. GASTON COUNTY SUPERINTENDENT OF EDUCATION

1. Support [shelter operations](#) at the designated shelters.
2. Assist Gaston County American Red Cross and Social Services in [shelter management](#).
3. Support efforts to locate clothing for evacuees.
4. Provide personnel for the operation of [designated shelters](#).

N. GASTON COUNTY HEALTH DEPARTMENT DIRECTOR

1. Coordinate all public health functions.
2. Assist in collection of milk samples for analysis by North Carolina Radiation Protection (NC RAD Protection).
3. Provide liaison with County EOC and provide technical assistance and consultation as needed.
4. Prior to the emergency, identify temporary storage sites for contaminated material.
5. Provide technical assistance and supervision to county and city water supply operations for any special or unusual treatments.
6. After consultation with the N.C. Department of Health and Human Services (DHHS), order water supply sites to cease operations and close intake systems where deemed necessary.
7. Provide technical assistance for water supplies, such as individual water supplies, that are not the responsibility of DHHS.
8. Coordinate request for emergency drinking water.

9. Maintain close coordination with the Chief of North Carolina Radiation Protection (NC RAD Protection).
10. Maintain and [administer Potassium Iodide](#) (KI) for the general public and institutionalized individuals.

O. GASTON COUNTY MENTAL HEALTH DIRECTOR

1. Provide appropriate crisis counselors for citizens and emergency response personnel.
2. Support Gaston County American Red Cross, Social Services and Board of Education in [shelter management](#).
3. Provide personnel and transportation of needed supplies and equipment for the [designated shelters](#).

P. GASTON COUNTY PUBLIC WORKS DIRECTOR

1. Provide support in obtaining 30 and 55 gallon drums to be used for packaging contaminated material.
2. Support the removal of radiologically contaminated material.
3. Support the restoration of contaminated highways and other transportation facilities.
4. Provide all necessary maintenance personnel, equipment, and operations.
5. Monitor and report road conditions to the County EOC.

Q. MUNICIPAL POLICE CHIEF, FIRE CHIEF AND MAINTENANCE DEPARTMENT SUPERVISOR

1. Police Department Chief
 - a. Support Gaston County Police and Sheriff Department as necessary.
 - b. Provide traffic control, if needed, in support of [evacuation](#) and in the vicinity of shelters and report traffic problems to the Gaston County EOC.
 - c. Support Sheriff in [warning](#) and County Police in evacuating persons in the designated zones.
2. Fire Chief
 - a. Provide support equipment and personnel for decontamination operations, including earth moving and wash down.
 - b. Provide local area communications.
 - c. Support law enforcement in [warning](#) and [evacuating](#) persons in designated zones.
3. Maintenance Supervisor
 - a. Provide support in obtaining 30 and 55 gallon drums to be used for packaging contaminated material.
 - b. Support the removal of radiologically contaminated material.
 - c. Support the restoration of contaminated highways and other transportation facilities.
 - d. Provide all necessary maintenance personnel including equipment operations.
 - e. Monitor and report road conditions to the County EOC.
 - f. Provide all necessary equipment and supplies for decontamination operations.

R. PUBLIC INFORMATION OFFICER (PIO)

1. Release timely and accurate information to the public.

2. Maintain close coordination with the Duke Energy PIO, the NCEM PIO, and the Chairman of the Board of County Commissioners on public information releases. See also Paragraph IV.D., [Public Education and Information](#).

S. GASTON COUNTY RED CROSS DIRECTOR

1. [Direct operations](#) at the [designated shelters](#) and coordinate the support of school officials and Social Services personnel.
2. Provide support in the following:
 - a. Emergency mass-care assistance.
 - b. Assistance to individual families.
 - c. Augmentation of Gaston County medical personnel, equipment, and blood products.

T. STATE AND FEDERAL AGENCIES IN SUPPORT ROLE

1. NORTH CAROLINA DEPARTMENT OF EMERGENCY MANAGEMENT (NCEM). Coordinate overall state effort to provide support necessary for response and recovery.
2. NORTH CAROLINA STATE HIGHWAY PATROL (SHP). Provide law enforcement, security and traffic control.
3. NATIONAL WEATHER SERVICE, GREER S.C. Release emergency public service messages via National Oceanic and Atmospheric Administration (NOAA) weather radio.
4. UNITED STATES DEPARTMENT OF AGRICULTURE (USDA)
 - a. Support mass feeding for evacuees at the designated shelters and emergency response elements.
 - b. Locate and report sources of uncontaminated feed for livestock.
 - c. Restrict the sale, production, distribution and warehousing of livestock, produce and processed food products as needed.
 - d. Support sampling and monitoring activities, including the areas accessible by fish.
 - e. Close contaminated or suspected areas to the taking of fish.

U. PRIVATE BUSINESSES, INDUSTRIES AND ELECTRIC UTILITY COMPANIES

1. DUKE ENERGY COMPANY
 - a. Develop emergency response plans to support both the McGuire and Catawba sites.
 - b. Provide prompt and accurate reports of abnormal activity at the site as required by the United States Nuclear Regulatory Commission (NRC).
 - c. Provide incident assessment at the site.
 - d. Provide protective action recommendations to state and local government.
 - e. Provide equipment and training required to support state and local government response operations.
2. RADIO STATION WLNK - FM is the Local Primary (LP-1) station providing for the release of emergency instructions and information via [EAS](#) and Emergency Special News Releases to the public on a 24-hour basis.

V. GASTON COUNTY COORDINATING INSTRUCTIONS

1. Many tasks to be undertaken during the conduct of emergency operations will require the resources and the efforts of more than one agency of government.
2. Some tasks may require the efforts of various combinations of federal, state and county agencies.
3. Some Gaston County agencies have the resources and capability to accomplish the same task.

4. Attempting to fix responsibility for a single task with one agency in a predetermined manner is impractical in that it would preclude the flexibility required to respond to situations which could (and probably would) change continually.
5. Gaston County department and agency heads, directors, and supervisors are responsible for preparing their organizations to accept the role of "lead agency" when directed by the appropriate authority.

W. PRIMARY AND SUPPORT RESPONSIBILITY SUMMARY

1. The basic governmental units and responsible individuals for Gaston County are listed in [Figure 2](#).
2. [Figure 3](#) lists the major functions associated with emergency operations, the major response organizations, and the level of responsibility for a function. It is not intended to be all inclusive, but rather to summarize the operational concepts employed. The ranking member of the unit of government participating in the special function is responsible for organizing, training, equipping, committing, and controlling personnel for emergency response.
3. The fact that a unit of government (or the individual in charge of the unit) is assigned primary responsibility for a specific function does not necessarily mean that the unit possesses the capability to perform all tasks included in the function. The term "primary responsibility" as used herein is intended to mean "responsible for carrying out the function or seeing that it is carried out". Personnel with primary and support responsibilities are to be employed in a cohesive manner under the direction of the individual in charge of the unit with primary responsibility.
4. The policy development and major decision-making elements of the command and control function are carried out as prescribed by the Chairman of the Gaston County Board of Commissioners or the designated representative.
5. The overall operational elements of the [command and control](#) function are the responsibility of the Chairman of the Gaston County Board of Commissioners. Where necessary the Chairman has delegated to the Gaston County Emergency Management Administrator the authority to act on his behalf in all matters related to and dealing with the operational aspects of command and control in the conduct of emergency response actions.
6. The Gaston County Emergency Management Administrator utilizes the [County EOC staff](#) to carry out the function of overall command and control and other functions for which the Chairman of the Gaston County Board of Commissioners is primarily (and secondarily) responsible.
7. The Gaston County [Emergency Management Administrator](#) or alternate is available and on call 24 hours a day.
8. [Figure 3](#), lists major functions and major responsibility assignments. It is not intended to be all inclusive but rather to summarize the operational concept employed.

IV. EXECUTION

A. EMERGENCY ACTION LEVEL CLASSIFICATION SYSTEM

The initial notification and follow-up messages of any one of the four classes of an emergency action level are transmitted from either the McGuire or Catawba Nuclear Power Station Control Room to Warning Points in the following locations:

1. McGuire Nuclear Power Station
 - a. State Warning Point

- b. Catawba County
 - c. Cabarrus County
 - d. Lincoln County
 - e. Gaston County
 - f. Iredell County
 - g. Mecklenburg County
2. Catawba Nuclear Power Station
- a. State Warning Points in North & South Carolina
 - b. Gaston County, NC
 - c. Mecklenburg County, NC
 - d. York County, SC

Local governments will rely heavily on information and recommendations provided by the plant for determination of minimum off-site response measures. (See [Figure 4](#)) The four classes of emergencies are:

1. **Unusual Event** – The least serious of the four classifications. It means that a minor event – either operational or security – has occurred at the station. Unusual events pose no threat to the public safety, but due to strict federal regulations warrant an increase awareness by the plant operator and off-site emergency response agencies. No release of radioactive material is expected.
2. **Alert** – In this classification, an event – either operational or security based – has occurred that would reduce the plant’s level of safety. Although there would be no threat to the public safety, county and state officials and the plant operator would prepare emergency operation centers in case the situation worsens. Any radioactive release associated with the event would be minimal.
3. **Site Area Emergency** – This classification means an event has occurred in which major safety equipment has failed or is likely to fail, or a security event has occurred in an area where the reactor and /or equipment used to safety shut down the reactors are located. The sirens could be sounded. The public should listen to the Emergency Alert System (EAS) for information and instructions. Any release of radioactive materials would be expected to stay within strict federal guidelines.
4. **General Emergency** – The most serious of the four classifications. It means that an event has occurred in which actual or imminent fuel damage is likely, or a security event has resulted in a loss of physical station control. State and local authorities would take action to protect the public. The Emergency Alert System (EAS) would give information and instructions for people in the affected areas. Any release of radioactive materials associated with the event could exceed strict federal guidelines.

B. WARNING AND NOTIFICATION METHODS AND PROCEDURES

1. A Dedicated system (DemNet) is the primary means of transmitting the initial notification of any one of the four classes of an emergency from either the McGuire or Catawba Station control room to the County Warning Point. Commercial telephone is the secondary means and voice radio is to be the tertiary means of notification.
2. Messages received must be authenticated. The two methods by which a message reporting an emergency action level can be authenticated are:
 - a. The telecommunicator at the County Warning Point verifies that the code word transmitted is on the list of authenticator code words.
 - b. Upon completion of the call, the telecommunicator calls back to either the McGuire or Catawba

Station control room to verify that the report is authentic.

3. The telecommunicator determines the method of authentication. If transmitted by radio, the message must be authenticated by code word.
4. The message format for reporting an emergency situation to the County Warning Point is shown in [Annex F](#) (State Plan). The same format will be used for initial and follow-up messages.
5. The telecommunicator on duty at the County Warning Point is to complete a warning message form at the time the report is being transmitted. Particular attention will be given to the action level classification, time, date, and the name of the individual making the report.
6. The individual in charge of the operation of the County Warning Point is responsible for assuring the availability of the current edition of the authenticator code words to all telecommunicators / dispatchers. (Note: The authenticator code words are furnished by the N.C. Division of Emergency Management.)
7. **Coordinating Instructions:**
 - a. Due to the sensitive nature of the information included in the notification of an emergency, and the requirement for speed, the telephone is to be used by all participants whenever possible.
 - b. Gaston County's key personnel are alerted by pager message initiated by the Communications Center, followed by telephone contact.
 - c. If necessary, the County Sheriff's Deputies will hand deliver written copies of the notification to the designated agencies. (See [Figure 9](#), Key Alert Notification Chart.)
 - d. Generally, follow-up information and subsequent reports are transmitted immediately by the fastest means possible to the individuals shown on the Gaston County Alert List.
8. Gaston County has the responsibility for initiating warnings within the county. When public notification has been recommended by Duke Energy officials or ordered by SERT (after the State has assumed command and control), County emergency personnel will immediately implement all means at their disposal to alert and instruct residents.
 - a. **Primary Notification** - The Duke Energy Company fixed siren system, with activation controls located in the Gaston County Warning Point, will serve as the primary public alerting system. When activated, this siren system is designed to warn immediately all areas of Gaston County within the 10-mile EPZ. For the initial notification, the fixed sirens will be sounded for **four (4) three-minute (3 min) periods**. These three-minute periods will be interrupted only by intervals to reactivate the siren encode system. Thereafter, the number of soundings will be at the judgment and discretion of the official responsible for activating the system.

NOTE: THE EMERGENCY ALERT SYSTEM (EAS) MUST BE ACTIVATED THREE TO FIVE MINUTES AFTER THE ACTIVATION OF THE SIREN SYSTEM. THIS TIME WILL ALLOW THE GENERAL PUBLIC TO GAIN ACCESS TO RADIO AND TELEVISION STATIONS WITHIN THE EMERGENCY BROADCAST AREA. SIREN SYSTEM IS USED TO GAIN THE ATTENTION OF THE PUBLIC.
 - b. **Secondary Notification** - Tone alert weather radios, operated by the National Weather Service, will provide an automatic alarm concurrently with siren activation. The weather radios will also broadcast emergency instructions to the public.
 - c. As an additional alerting resource, Gaston County may utilize a reverse call back system if available to place phone calls with a pre-scripted message to AT&T phone lines within the effected area.
9. Should the siren system fail to properly operate, designated vehicles with sirens and/or public address (PA)

systems will be activated to serve as a [back-up method](#).

- a. Emergency vehicles with effective sound devices will be instructed to routes or area to cover, stop each quarter (1/4) mile in populated areas or at each house or group of houses that are more than 1/4 mile apart. The following announcement will be made:

ATTENTION. ATTENTION. AN EMERGENCY SITUATION HAS DEVELOPED IN THIS AREA THAT CAN AFFECT YOUR SAFETY. TURN ON YOUR RADIO OR TELEVISION FOR INFORMATION AND INSTRUCTIONS.

See Back-up Alert and Notification Listing, ([Figure 6 for McGuire](#) and [Figure 8 for Catawba](#)) in this Plan. If the entire area within the 10-mile EPZ does not need to be warned by the primary fixed siren system, this warning time estimate might be reduced by concentrating warning vehicles in smaller operational areas.

- b. To better ensure receipt of the initial warning by members of the community, each route may be run twice. The second run or backrun will be to confirm alert and notification. Backruns need only to stop at houses that are dark at night or it is apparent that people are not complying with Emergency Broadcast instructions. If necessary, door-to-door alerting occurs during the second run.

10. Zone Warning Responsibility

- a. Police units and fire departments are stationed throughout the 10-mile EPZ to provide zone warnings.
 - b. These units may be augmented by a predetermined number of vehicles from outside the 10-mile EPZ from other emergency response agencies.
 - c. Local law enforcement personnel will immediately establish traffic control points at predetermined locations upon evacuation orders.
11. To avoid extreme apprehension and possible panic on the part of the public, it is imperative that the television and radio stations receive and transmit the EAS or public information message prepared by the County or State PIOs. (See [Annex D](#) - State Plan - for EAS message format.)
 12. [Organizations tasked with zone warning responsibilities](#) will seek to identify, within their zone, households where hearing impaired persons reside and, where appropriate, provide personal notification to these persons. [Identification of these households](#) may be secured through the special needs response card received from the annual mailing of the McGuire and Catawba Nuclear Station Information Brochure to all 10-mile EPZ residents.

C. INCIDENT ASSESSMENT

1. Gaston County has limited capabilities and resources for assessing and monitoring actual or potential consequences of a radiological emergency within the plume exposure pathway EPZ.
2. Gaston County has a [Radiological Safety Officer Team](#) (ROT) trained in radiological monitoring. Lead Fire/Haz-Mat and EMS/STAR personnel within the County have been trained using monitoring equipment and equipment is pre-staged on trailers for deployment.
3. The lead or primary responsibility for incident assessment during the initial stages of the emergency will be borne by Duke Energy supported by state and county resources, in that order, as they become available.
4. N.C. Radiation Protection will maintain continuous communications with field monitoring teams, the

State/Gaston EOC and Duke Energy to assess the actual situation, ensure coordination of the monitoring and sampling effort, and provide timely consultation to county and state officials on any recommendations for protective response and/or [distribution of potassium iodide](#) (KI).

5. If an evacuation is ordered, the Gaston County Police with assistance as needed will, on order, establish traffic control points.
6. When requested, the State Highway Patrol will establish necessary traffic control points.
7. Local response operations and monitoring operations will be activated through the Gaston County Emergency Management Department.
 - a. Primary means of notification is the commercial telephone.
 - b. Radio will be the secondary means of notification and will be used for reporting back to the EOC.

D. PUBLIC EDUCATION AND INFORMATION

1. The Gaston County [Public Information Officer](#) (PIO), or authorized representative, will represent Gaston County in the preparation and release of emergency public information and instructions concerning a nuclear radiation incident at either the McGuire or Catawba Nuclear Stations.
 2. Coordinating Instructions
 - a. Since knowledge of the potential duration of release and the time available before expected off-site exposures is important in determining specific public instructions, the radiation protection component of the Gaston County EOC must make available to the public information staff all data necessary to prepare statements for public release.
 - b. The PIO staff will coordinate all [public information](#) activities between Gaston County, the State and Duke Energy Company.
 - c. Facilities for county public information personnel will be provided at the County EOC and the Joint Information Center.
 - d. The PIO will be responsible for collecting and releasing all information to the news media, verifying, resolving and reporting all rumors and other conflicting information to SERT, scheduling news briefings, and preparing releases for distribution in Gaston County.
 3. Gaston County government will inform the news media on the status of plans to cope with emergencies resulting from incidents at either the McGuire or Catawba Nuclear Stations. The public information staffs of Gaston County, Duke Energy Company, and SERT will jointly prepare the programs and present them to the media. The presentations will include:
 - a. A briefing on the status of the State, Gaston County, and the effected Station emergency response plans.
 - b. An orientation on radiation and its effects on people and the environment.
 - c. Procedures and points-of-contact to be used by the media in obtaining pertinent information.
 4. The three points-of-contact for media personnel to obtain current information during an emergency are:
 - a. The Duke Energy Company Joint Information Center, located in the Duke Energy Electric Center in
-

Charlotte.

- b. The State EOC (SERT Headquarters) in Raleigh.
- c. The Gaston County EOC media room located in the Gaston County Emergency Services Building in Gastonia.

5. Communications to the Public

- a. The primary means of communications to the public are broadcast radio, television, and cable vision. Twenty-five radio stations, five television stations and three cablevision companies serve the area of Gaston County within the 10-mile EPZ.
- b. Gaston County [EAS](#) stations are in the Charlotte Operational Area. (See [Annex E](#) - State Plan - Section IV.) The Local Primary Station (LP-1) for the Charlotte area is radio station WLKN-FM.
- c. The secondary means of communications to the public is the National Weather Service radio station at Greer S.C.

6. Information and instructions transmitted to the public during periods of an emergency may refer to information published and distributed during non-emergency periods, such as:

- a. Geographical areas or political subdivisions of Gaston County within the 10-mile radius of either the McGuire or Catawba Nuclear Stations.
- b. Travel routes and shelter facilities should an [evacuation](#) be required.
- c. Educational information on radiation.
- d. Instructions concerning the [use of drugs or medicines to off-set the effects of radiation](#).
- e. Instructions on how the public will be alerted and informed of an emergency condition, or a potential threat, particularly between the hours of midnight and 6 a.m.

7. Concept of Operations.

- a. During normal, non-emergency periods, the PIO will participate in all annual exercises conducted by Gaston County and NCEM. Prior to an exercise, the public information staff should inform the media as to the scope of the exercise. The PIO should also prepare news releases encouraging the public as to how they may participate.
- b. The PIO will prepare and maintain on file in Gaston County the following:
 - i. Draft news releases concerning incidents at either the McGuire or Catawba Nuclear Stations that would require Gaston County authorities to alert and warn the public.
 - ii. Educational materials explaining radiation, nuclear power site operations, possible effects from radioactive releases, and self-help methods of protection.

NOTE: Camera-ready newspaper copy, slides for television and simple verbal directions for radio of the routes and shelter locations are maintained by the Department of Crime Control and Public Safety PIO.

- c. Upon notification of an incident at either the McGuire or Catawba Nuclear Stations, the Gaston
-

County PIO will:

- i. Be prepared to have representatives report to the [Gaston County EOC](#) and to the Joint Information Center (JIC).
 - ii. Immediately review and update all prepared warning and evacuation information.
 - iii. Review and update, if necessary, all educational materials for release to the news media during the emergency.
 - iv. Brief local news media representatives on the local situation.
 - v. Establish contact with NCEM Public Information section and provide a Gaston County briefing(s), if requested.
 - vi. Make recommendations to the County Manager concerning release of [information to the public](#).
 - vii. Take other actions as directed by the County Manager or designee.
- d. Following an emergency, the PIO will maintain liaison with SERT PIO where deemed appropriate and lend assistance towards a successful conclusion of the combined operation.

E. PROTECTIVE RESPONSE

1. During the initial period of an emergency, prior to State assumption of command and control, Duke Energy personnel will recommend protective actions for Gaston County. Once command and control are assumed by SERT, the State is responsible for recommending protective response actions.
2. Until SERT assumes control, the Chairman of the Board of County Commissioners will take the final responsibility for ordering the evacuation.
3. Initially the Telecommunications Supervisor will make every effort to contact the Emergency Management Administrator, the County Police Chief and the County Commissioners. If after five minutes, the telecommunicator is unable to contact the required persons, recommendations from Duke Energy personnel will be followed. If conditions warrant immediate action of alerting procedures, the dispatcher will follow the recommendations of the representative from either the McGuire or Catawba Station.
4. Protective actions for the public and emergency workers will be based on recommendations of the U.S. Environmental Protection Agency (EPA) in [EPA 400-R-92-001](#), the U.S. Department of Health and Human Services and the Food and Drug Administration (FDA) regarding human food and animal feed as published in the Federal Register of October 22, 1982, (Vol.47, No. 205) [Docket No. 76N-0050]. These actions may include:
 - a. Area evacuation of all or segments of the population. Evacuation routes, shelters, monitoring points, hospitals, and the population density are detailed on the operations map that is available on request.
 - b. Advising the public to stay indoors by public address systems, radio and television, and door to door alerting, where necessary. See Paragraph IV.B. of this Plan, [Warning and Notification Methods and Procedures](#).
 - c. [Administering potassium iodide](#) (KI) tablets as a thyroid blocking agent to emergency workers.
 - d. Control of water supply intake.

-
- e. Diversion, embargo, or destruction of agricultural products.
 - f. Respiratory protection (may only consist of handkerchiefs over nose and mouth).
 - g. Other appropriate actions (e.g. advising the public to wash home grown products prior to consumption).
5. The immobility of hospital and nursing home patients may preclude [evacuation](#) of these facilities. If so, the following protective actions may be advised:
- a. Close windows and doors.
 - b. Discontinue use of air conditioners.
 - c. Stay indoors and relocate to the interior or basement area of the building, if necessary.
 - d. After consultation with the State Health Administrator, DENR or NC RAD Protection, administer KI as a blocking agent. (See State Plan - Part 1, [Annex K.](#)) The Gaston County Health Department will be responsible for delivering KI to hospitals and nursing homes.
6. Distribution and Administration of Radiological Protective Drugs
- a. The Gaston County Health Department Director is responsible for the storage and distribution of KI to the general public and institutionalized individuals.
 - b. The Health Department Director, after consultation, or reasonable efforts to consult with the State Health Administrator or the senior NC RAD Protection representative, is empowered to authorize the distribution of KI to emergency workers as they receive their emergency monitoring equipment issued at staging areas.
 - c. The State Health Director will recommend the administration of KI to emergency workers, institutionalized persons and general public in affected areas.
 - d. KI tablets are stored at the Gaston County Health Department.
7. Transportation for Evacuation.
- a. General
 - i. Primary means of transportation will be private vehicles.
 - ii. News releases will urge the sharing of rides with persons without transportation.
 - iii. For those without transportation, pickup points/routes will be established and publicized in appropriate EAS messages.
 - iv. Non-ambulatory patients without necessary transportation means will be transported by pre-designated emergency medical vehicles.
 - b. Special Facility Population
 - i. **Schools** –

County operated schools: Students may be evacuated to pre-designated shelters outside
-

the 10-mile EPZ by County school buses. Each County's school in the 10-mile zone is paired with a school outside the 10-mile EPZ to facilitate planning and familiarization. These pairings are publicized in the McGuire and Catawba Station Safety Information Brochures and will be repeated during an appropriate public information messages. See [Figure 10](#) for list of schools.

Private and or Charter Schools: Each of these are primary responsible for establishing their evacuation and relocation site plan as well as providing needed transportation for students and staff.

- ii. **Hospital, Nursing and Domiciliary Care Facilities** - Institutionalized persons within the 10-mile EPZ may be evacuated utilizing emergency medical vehicles for non-ambulatory patients and available buses and vans for ambulatory patients.
- iii. **Mobility-Impaired persons within the 10-mile EPZ** will be pre-identified as reasonably possible and provided specialized transportation if required. A telephone listing by name, and address will be maintained by the Emergency Management Administrator on those persons within the 10-mile EPZ requiring transportation assistance. Listing may include a consolidation of the special needs response cards received from the annual mailing of the McGuire and Catawba Station Safety Information Brochure and current Duke Energy listing of system customers on life support equipment. This listing will be augmented with information provided by rescue squads, fire departments, social service agencies, and health care providers.
- iv. **Daycares:** Each of these are primary responsible for establishing their evacuation and relocation site plan as well as providing needed transportation for children and staff.

c. Evacuation Routes.

- i. The Gaston County Police, assisted by the State Highway Patrol and local police departments will control access to evacuated areas.
- ii. The N.C. Department of Transportation and local public works departments will clear evacuation routes of any impediments such as snow, ice or equipment.
- iii. The N.C. Department of Transportation will be responsible for posting evacuation route signs.
- iv. The following major highways and secondary roads within the Gaston County portion of the 10-mile EPZ are designated as primary evacuation routes. Major highways have a projected traffic capacity under emergency conditions as shown.

McGuire Nuclear Station	NC Highways 273, 16, 27 and 275, I-85, US Highway 321. - 2,000 vehicles per hour.
	Secondary roads shown on operations map . - 1,700 vehicles per hour.

Catawba Nuclear Station	N C Highways 273, 274 and 279 - 1,500 vehicles per hour
	Secondary roads shown on operations map . - 1,200 vehicles per lane per hour.

d. Evacuation Sheltering.

- i. A [list of designated locations](#) to be used as evacuation shelters for McGuire and Catawba Nuclear Power Stations is maintained by the Gaston County Emergency Management office.
- ii. These shelters will be staffed by the Red Cross and Gaston County agencies that are trained to assist with [shelter operations](#).
- iii. The required personnel for radiological monitoring and decontamination at these shelters will be furnished through the Gaston County Emergency Management Office using fire haz-mat and EMS/STAR personnel.
- iv. These shelter spaces are based on 40 square feet per shelteree. If more shelterees arrive than anticipated, this figure can be reduced without creating discomfort to the sheltered.
- v. If evacuation is necessary during school hours, those children who reside inside the 10-mile evacuation area should remain at the school they attend, provided that school is outside the evacuated area.
- vi. If necessary, the EOC emergency shelter communication link will be supplemented by amateur radio support or by positioning a radio equipped law enforcement vehicle at each shelter.
- vii. N.C. Radiation Protection may provide more expert personnel to assist and consult in the event of major shelter contamination problems.
- viii. Radiation specialists and health physicists from Duke Energy may be available, if needed, to provide support for decontamination at shelters.

F. RADIOLOGICAL EXPOSURE CONTROL

1. Prior to the assumption of command and control by the State, Gaston County Emergency Management and Duke Energy Company are the two primary organizations responsible for ensuring that radiation doses received by the public and emergency workers are below normally acceptable maximum levels.
 - a. EPA recommended Protective Action Guides ([PAGs](#)) will be used as the maximum acceptable levels of radiation for the public and emergency workers during an emergency. These levels are specified in [State Plan](#) - Part 1, Basic, Section VIII.
 - b. Wherever possible, emergency workers will be removed from the threatened area before any dose is received.
2. The Gaston County Board of Commissioners has the decision-making authority for all operations. A representative from Duke Energy Company is responsible for making recommendations to the commissioners concerning the use of the protective response options specified in State Plan - Part 1.
3. [The Radiological Safety Officer Team](#) (ROT) for the Gaston County Emergency Management will issue

instruments to those fire and rescue workers who do not already have them. These emergency workers have been trained in the use of hand-held survey meters, self reading dosimeters, and dosimeter chargers.

- a. In the event of an emergency, the ROT will distribute available dosimeters to all Gaston County personnel who may be subject to significant radiation exposure.
 - b. Distribution of TLDs to County personnel will be coordinated by Gaston County Emergency Management and North Carolina Emergency Management. NC RAD Protection is responsible for reading and analyzing TLDs. They will also monitor the dosage levels to make appropriate health and safety recommendations. (See [State Plan, PART 1](#), Section IV.G.)
 - c. The County ROT and a representative from NC RAD Protection will assist in reading and analyzing the dosage levels shown on the TLDs and make appropriate recommendation concerning the health of the individuals concerned.
 - d. All dosimetry records will be made available to the involved personnel and employing organizations.
4. During the course of the emergency, radiation dose levels and other exposure records will be reviewed by the ROT, and the N.C. Radiation Protection Section to formulate recommendations to the Gaston County Board of Commissioners and to assure that workers exposure remains below EPA recommended PAGs.
- a. Communications will be maintained between the Gaston County ROT and the appropriate authority with SERT to assure that exposure levels of emergency workers moving on and off site are below recommended PAGs.
 - b. The policy under this plan is to prevent emergency workers from receiving a radiation dose in excess of the stated PAGs. If workers cannot be rotated and the activities involved are critical to public protection, the Gaston County ROT and representatives from NC RAD Protection may recommend to the Gaston County Board of Commissioners that emergency workers be allowed to exceed the PAGs.
 - c. The senior elected official has final approval authority to exceed PAGs. Exceeding 5 REM will be done on a **voluntary basis only**, volunteers must be fully informed of health risk prior to taking such missions.
5. The Gaston County fire departments and the Landfill Department have the responsibility for coordination of monitoring, decontamination, and waste disposal actions (with support from the N.C. Radiation Protection Section).
6. When any monitoring station obtains radiation readings exceeding 300 count per minute (CPM), the monitoring station will take the following actions:
- a. Notify the Gaston County EOC and/or the representative from SERT.
 - b. Be prepared to assist in decontamination and in the containment and disposal of wastes such as clothes, water, or materials resulting from decontamination.
7. Field monitoring data collected during the initial hours of an announced emergency will be transmitted or delivered to Gaston County EOC for analysis. Duke Energy Company will assist in the interpretation of this data.
8. When decontamination is to be conducted, a representative from SERT will be dispatched to the scene to supervise the decontamination and waste disposal activities, if possible.

G. RECOVERY, REENTRY, AND POST- INCIDENT OPERATIONS

1. The problems involved in reentry and recovery operations are in direct proportion to the amount of radioactive contamination received and remaining. North Carolina Radiation Protection (RP) is the lead agency in the collection and analysis of monitoring reports and air, foliage, and water samples. RP will be assisted by qualified personnel from the Duke Energy.
2. Analysis findings will be submitted to the Chief of Radiation Protection, who will forward the findings with his recommendations to the SERT leader. This information will then be submitted to the highest elected official of the government concerned with a recommendation for reentry or for continued evacuation of the area.
3. Reentry authorization will be made by the senior elected official of the area concerned. Emergency service organizations will be immediately informed and the PIO/JIC will release the announcement to the news media with any additional instructions or information as appropriate.
4. Recovery and post-incident operations will continue as long as required after a reentry is authorized. These actions will include:
 - a. Decontamination of people, animals, property, food, and water.
 - b. Continued security of all public and private property, including unauthorized entry into contaminated areas.
 - c. Health and medical services for evacuees.
 - d. Continuous monitoring of people and property, including long-term monitoring.
 - e. Proper radioactive waste disposal.
5. The Gaston County EOC will coordinate Local Support during the reentry and recovery phase, utilizing the same resources used in the evacuation phase.

V. SUPPORT RESOURCES, PROCEDURES, FACILITIES AND EQUIPMENT

A. EMERGENCY RESPONSE SUPPORT AND RESOURCES

1. Resources and support assistance from sources external to State government and Gaston County may be required to conduct emergency operations within the EPZ. To assure that these resources are committed in an efficient and effective manner, Gaston County may dispatch a representative to the Duke Energy Emergency Operations Facility Center.
2. Duke Energy Company and the Gaston County Emergency Management Department have designated representatives to serve with SERT as the representative of the licensee and the Board of County Commissioners, respectively.
3. Procedures for [control and allocation of resources](#) required to support emergency operations in Gaston County will be prescribed by the Chairman of the Gaston County Board of Commissioners.
4. A [resource manual](#) containing the identification, location, and procurement of resources is maintained by Gaston County Emergency Management.
5. Coordinating Instructions.
 - a. Requisitions for personnel, supplies, and equipment during an emergency will be directed to the Emergency Management Administrator.

- b. The types and quantities of resources committed by county departments during an emergency are to be reported to the Emergency Management Administrator.
- c. Local resources to support federal response, will be made available to the extent possible.
- d. Federal support will be coordinated through the State.

B. MEDICAL AND PUBLIC HEALTH SUPPORT

- 1. Select hospitals in the state have the capability to evaluate radiation exposure and radioactive material intake. These limitations are adequately compensated for by agreements with private companies to provide whole body counting equipment and with laboratory analysis from medical institutions, the federal government and private commercial laboratories.
- 2. Local hospital support for treating radiation incident victims. (See [Part 1, State Plan](#), Section VIII, Figure 12 for other hospitals in the vicinity)

University Hospital	
Bed Capacity:	130
Location:	8800 N Tryon St , Charlotte, N.C.
Heliport:	Yes
Contact Person:	Emergency Room Charge Nurse
Carolina's Medical Center	
Bed Capacity:	853
Location:	1000 Blythe Boulevard Charlotte, N.C.
Heliport:	Yes, and Helicopter Service
Contact Person:	Emergency Room

- 3. The Office of Emergency Medical Services (OEMS) Section, Facility Services Division, Department of Human Resources is responsible for developing plans to marshal ambulance and rescue resources and for coordinating emergency medical services at radiation incident sites and shelters.
- 4. In the event of an incident at either the McGuire or Catawba Nuclear Stations, the Gaston County EMS representative on the County EOC staff will advise the Gaston County EMS Director of the medical facilities to be evacuated and those capable of receiving radiated patients. If the number exceeds Gaston County's capability, the EMS Director will request assistance from the Western Regional OEMS office. At the staging area EMS personnel will be issued dosimeters, briefed on the nature and extent of the incident, and assigned missions.

C. EMERGENCY FACILITIES AND EQUIPMENT

- 1. Gaston County government conducts emergency command and control functions from the [Gaston County EOC](#) located in the Emergency Management Department in the basement of the Emergency Services Building, 615 North Highland Street, Gastonia, N.C.

2. Gaston County, to the extent possible, will provide off-site monitoring in the vicinity of the facility.
3. The County EOC complex houses a communications center and is equipped with an emergency power generator, and other necessities required for continuous operation.
4. The County EOC is equipped with the following:
 - a. commercial telephone service (in-place),
 - b. a two-way radio (portables),
 - c. fax machines,
 - d. Dedicated notifying line between both the McGuire and Catawba Nuclear Stations and the EOC,
 - e. Dedicated Line between the Duke Energy EOF, State of North Carolina (McGuire & Catawba), State of South Carolina (Catawba) and counties (McGuire - Catawba, Iredell, Lincoln and Mecklenburg) (Catawba - Mecklenburg and York, SC), and
 - f. a dedicated computer line.
5. The decision to activate the Gaston County EOC, will be made by the [Emergency Management Administrator](#) or alternate.
6. Documentation showing the time required from notification of EOC staff to establishment of command and control, under varying conditions, is maintained by the Gaston County Emergency Management Office.
7. To the extent available, Gaston County Emergency Management will provide radiological monitoring equipment and personnel who have been trained in radiological monitoring.
 - a. Radiological monitoring equipment is issued to trained individuals and departments only. Gaston County Emergency Management maintains detailed records regarding equipment issue, personnel training and equipment maintenance.
 - b. Radiological monitoring equipment used by county government is inventoried and inspected by Gaston County Emergency Management. All instruments are calibrated in accordance with the schedule established by the State of North Carolina.
 - c. Gaston County Emergency Management has access to various emergency equipment located throughout the county and in the Emergency Operations Center to support the McGuire Nuclear Site and Catawba Nuclear Site in the event of an emergency. This equipment includes protective equipment, communications equipment, radiation monitoring equipment and emergency supplies. Gaston County Emergency Management maintains an [inventory of emergency equipment](#) that supports the Gaston County Plan.
8. Field monitoring data collected during the approximately first 7 to 9 hours of an announced emergency will be transmitted or delivered to the Gaston County Emergency Management for analysis. Duke Energy Company will assist in the interpretation of this data.

VI. EMERGENCY COMMUNICATIONS

- A. Provisions have been made for communications networks to support all emergency response organizations throughout the course of an emergency. These networks are formed using Duke Energy Dedicated Line (DemNet),

commercial telephone service, Duke Energy Company radio systems, local government emergency services two-way radio systems, facsimile machines and State and Federal government communications.

B. To assure that an immediate level of alert and notification readiness is available, the following emergency response facilities are staffed 24 hours a day:

1. The McGuire and Catawba Nuclear Station control rooms.
2. The State Warning Point located at the State Emergency Operations Center and Highway Patrol Communications Center in Raleigh, N.C.
3. The Gaston County Warning Point located at the County Communications Center.
4. The National Weather Service Forecast Office for North Carolina in Raleigh at North Carolina State University.
5. The National Weather Forecast Office in Greer, S.C., serving Gaston County.

C. The following principal emergency response organizations are not staffed 24 hours a day, but are required to have key personnel on call.

1. Gaston County Emergency Management.
2. The North Carolina Department of Emergency Management
3. The North Carolina Radiation Protection Section, Department of Environment and Natural Resources.

D. COMMUNICATIONS BETWEEN RESPONSE ORGANIZATIONS.

1. The Duke Energy Dedicated DemNet System is the primary means of communication between Mecklenburg, Lincoln, Iredell, Catawba, Cabarrus and Gaston counties and the State of North Carolina (McGuire) and Mecklenburg, York, S.C. counties, the States of North and South Carolina (Catawba). The State telephone conferencing system is the primary means of communication between the State and Federal response organizations.
2. The State Emergency Management radio network is the primary two-way radio communication link with contiguous local governments.
3. The Division of Criminal Information (DCI), with terminals located in the Gaston County 911 Center, in contiguous local governments, and in both North Carolina and South Carolina EOCs can be used for emergency communications between the two state governments and can be used for emergency communications between these points and Gaston County.
4. The State Rescue radio frequency can also be used for emergency communications with contiguous local governments.
5. The Duke's Dedicated System is used for coordination of sirens and EAS, and protective actions.

E. COMMUNICATIONS BETWEEN DUKE ENERGY COMPANY, THE STATE AND GASTON COUNTY

1. The primary means of communication between either the McGuire or Catawba Nuclear Station, State EOC (SERT), NCEM Western Branch Office and the Gaston County EOC will be the Duke Dedicated System. (Facsimile capabilities are available for hard copy communications.)
-

2. Back-up communications between these points and SERT Headquarters will be commercial telephone, facsimile and two-way radio systems. These systems will be provided by expanding the existing systems now operated by Duke Energy Company, the North Carolina EOC and Gaston County Emergency Management. System expansion in all cases will include the addition of base stations, mobile units and hand carried portable units, as required.

F. MEDICAL SERVICES COMMUNICATIONS

1. Gaston County EMS (GEMS) and County rescue vehicles can communicate with each other and with contiguous counties and hospitals on the State Rescue radio frequency.

G. RADIOLOGICAL MONITORING AND DECONTAMINATION COMMUNICATIONS

1. Information from the field will be transmitted via Gaston County Fire Department's frequency. The Gaston County Sheriff's Department frequency will be the secondary means for transmission.
2. Information on radiological monitoring from SERT will be transmitted via commercial telephone.

H. PERIODIC COMMUNICATIONS TESTS

1. Gaston County's emergency services radios are utilized constantly. Therefore, testing is a continuous process.
2. Communications with the State will be tested on a monthly basis.
3. Communications between the County EOC, State EOC, and field assessment teams may be tested annually.
4. See Part1, State Plan, Section VI, for testing of State and Federal communications links.

I. ADDITIONAL BACK-UP COMMUNICATION

1. If requested and available, the North Carolina State Highway Patrol can position a radio equipped patrol car at the County EOC to provide back-up communications. In an extreme emergency, this patrol car may transport hard-copy messages.
2. If necessary, the EOC-emergency shelter communications link, commercial telephone, will be supplemented by amateur radio support or by positioning a radio-equipped law enforcement vehicle at each shelter.

K. READINESS CAPABILITIES

1. The Gaston County Communications Center is the County Warning Point.
2. The Gaston County Communications Center radio system is the direction and control network and is capable of the following communications controls:
 - a. Notification and Warning
 - b. Traffic Control
 - c. Radiological Assessment

3. Shelter Communications
 - a. Commercial Telephone
 - b. Emergency Vehicles
 - c. Back-up communications by Amateur Radio.
4. Communications for Decontamination
 - a. The decontamination stations will be staffed by volunteer fire fighters and sheriff deputies.
 - b. The Gaston County Fire Department's radio channel will be used to call in radiological assessment information to EOC.

VII. PLANS, EXERCISES, DRILLS AND TRAINING

A. RESPONSIBILITY FOR PLANNING AND PERIODIC REVIEW

1. The Gaston County Emergency Management Administrator is the Emergency Planning Administrator for the county.
2. The Emergency Management Administrator will:
 - a. Participate in training personnel for emergency planning.
 - b. Ensure this plan and supporting agreements are reviewed and updated on an annual basis and ensure proper distribution by posting to the EPlan package on the internet. Any update will take into account the need for changes identified by actual drills and exercises.
 - c. Ensure that all corrective actions identified as a result of actual events, drills, exercises and annual reviews are coordinated with the affected agencies, that realistic suspense dates are established and followed up to maintain this plan in a current state of preparedness.
 - d. Ensure that all local agencies/organizations that are assigned responsibilities in this plan maintain appropriate written guidelines.
 - e. Ensure emergency telephone numbers are maintained in a current status.

B. RADIOLOGICAL EMERGENCY RESPONSE TRAINING

1. A training program for instructing and qualifying personnel which will implement the response plan for Gaston County will include the following personnel:
 - a. Gaston County Emergency Management Administrator.
 - b. Gastonia Fire Haz-Mat and GEMS/STAR personnel.
 - c. Incident assessment and damage control personnel.
 - d. Police, fire, rescue and medical support personnel.
 - e. Personnel and dispatchers responsible for emergency information and instructions.
2. Initial training and retraining of personnel will be done annually. Duke Energy Company and State personnel

will provide training assistance.

3. Included in this training will be:
 - a. Notification procedures.
 - b. Basic radiation protection.
 - c. Expected roles in support of radiological emergency response plans.
 - d. The Fundamentals Course for Radiological Monitoring.
 - e. For those local support organizations who will enter the site, training will also include site access procedures and on-site control procedures.

C. DRILLS

1. Periodic communications drills will be conducted with Mecklenburg, Cabarrus, Catawba, Gaston, Iredell and Lincoln counties (McGuire Nuclear Station) and Mecklenburg, Gaston and York, S.C. counties (Catawba Nuclear Station).
2. Annual communications drills may be conducted between Gaston County EOC, the State EOC, the McGuire and Catawba Nuclear Stations, and the field assessment teams.
3. An annual medical emergency drill involving simulated transportation and treatment of radiologically contaminated patients will be conducted on a rotation basis with the primary and back-up hospitals.
4. In conjunction with the annual refresher training, radiological monitoring drills will be conducted.
5. Qualified observers will evaluate all of the above drills.
6. Tabletop exercises and emergency operations simulations will be conducted as needed.

D. EXERCISES

1. Exercises will be conducted on an annual basis rotating between Catawba and McGuire sites under the authority of Federal Regulation 44 CFR 350. The scenario will differ from year to year to ensure that all major elements of response are tested within a six-year period.
2. There will be varied starting times for exercises to assure that at least one exercise will begin between 6 p.m. and 4 a.m. every six years.
3. Some exercises will be conducted during adverse weather conditions.
4. Some exercises will be unannounced.
5. The Extent of Play document for each exercise may include:
 - a. The exercise objectives and evaluation criteria.
 - b. Date, times and participating organizations.
 - c. Simulated events and a time schedule of real and simulated events.

-
- d. An off-site release or potential therefore to assure response by Gaston County's emergency services. These services will be listed in the narrative of the scenario.
6. Evaluation and Critique.
- a. A critique will be held as soon after the exercise as possible by Federal, State and local qualified observers.
 - b. All participating organizations will correct areas of concern as soon as practical.

VIII. FIGURES

Figure 1

Gaston County Organizational Chart

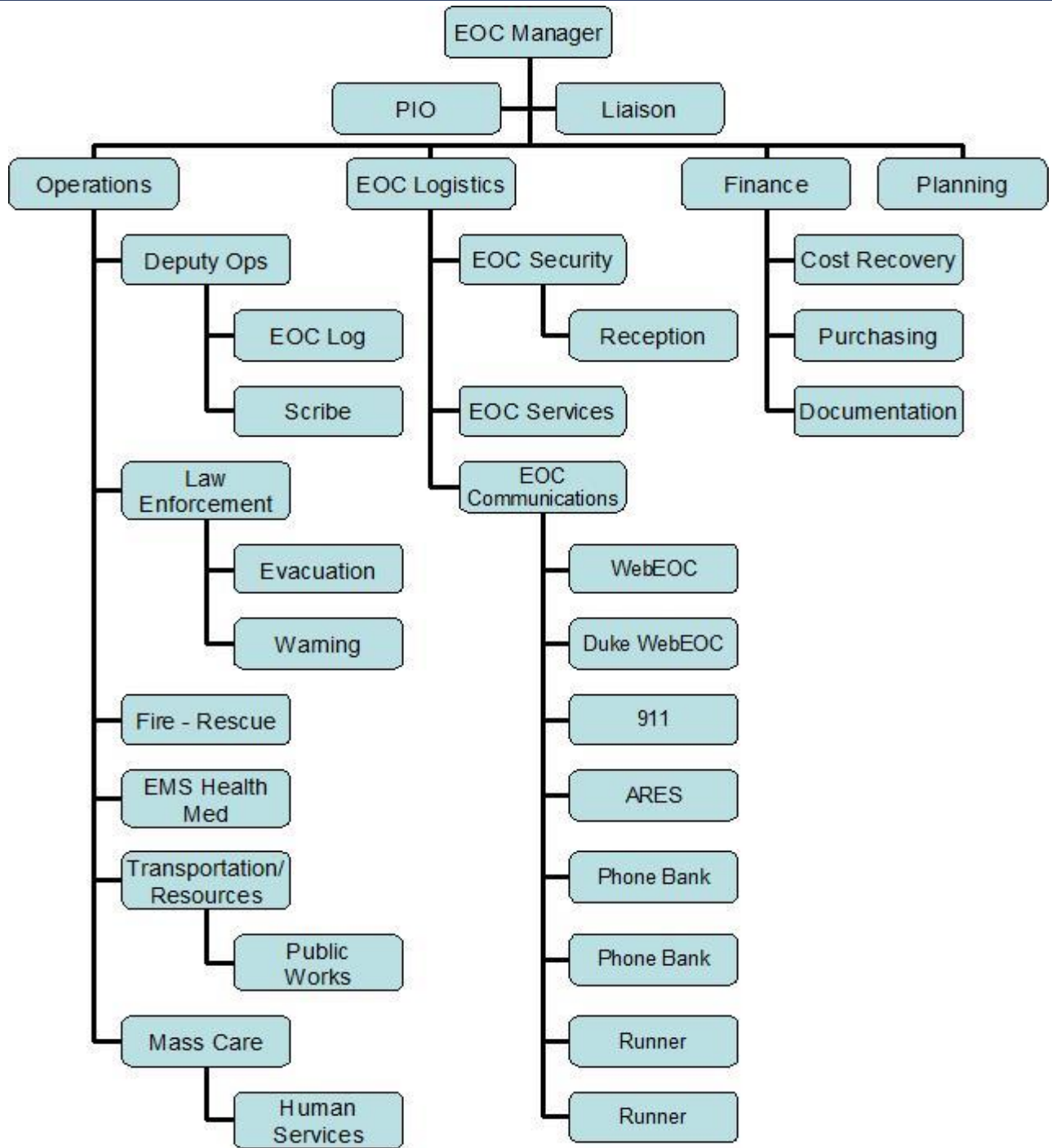


Figure 2
Primary and Support Responsibility Summary

GOVERNMENT ENTITY	TITLE OF KEY INDIVIDUAL
Gaston County	Chairman of Board of Commissioners
Administration	County Manager
Emergency Management	Administrator
Social Services	Director
Health Department	Director
Fire Departments	Fire Marshal / Fire Association President
Emergency Medical Service	Director
Communications Department	Director
Rescue Squads	Rescue Association President
Maintenance Department	Supervisor
Cooperative Extension Service	Director
Gaston County Board of Education	Superintendent
Mental Health	Director
Gaston County Landfill Department	Supervisor

Figure 3
Primary and Support Responsibility Matrix

FUNCTION	AGENCY	RESPONSIBILITY	
		P = Primary	S = Support
Command and Control	Gaston County Emergency Management Department	P	
Warning	Gaston County Communications Center	P	
	National Weather Service		S
	Division of Criminal Information		S
	Radio & Television Stations		S
	Gaston County Volunteer Fire Departments		S
	Gaston County Police Department		S
	Gaston County Rescue Squads		S
	Gaston County Sheriff's Department	P	
Notification and Communications	Gaston County Communications Center	P	
	Division of Criminal Information		S
	AT&T		S
	Duke Energy		S
Public Information	Gaston County Emergency Management / PIO	P	
	Duke Energy		S
	Radio and Television		S
	Local newspapers		S

	National Weather Service		
Law Enforcement	Gaston County Police Department	P	
	Gaston County Sheriff		S
Transportation	Gaston County ACCESS	P	
	Gaston County Board of Education		S
Incident Assessment	Duke Energy	P	
	Gaston County Emergency Management		S
	Cooperative Extension Agency		S
Public Health and Sanitation	Gaston County Health Department	P	
	Gaston County Public Works - Maintenance Division		S
Social Services, Shelter, Mass Feeding and Clothing	Gaston County Chapter of the American Red Cross	P	
	Gaston County Department of Social Services		S
	Gaston County Board of Education		S
	Gaston/Lincoln Mental Health		S
	Cooperative Extension Agency		S
	Gaston County Emergency Management		S
	Gaston Emergency Medical Services		S
	Gaston County Solid Waste		S
	Gaston County Police Department		S
	Gaston County Sheriff's Department		S
	Gastonia FD Hazardous Materials Team		S
Fire	Gaston County Fire Departments	P	
	Gastonia Fire Department		S
Emergency Medical and Rescue	Gaston Emergency Medical Services	P	
Traffic Control	Gaston County Police Department	P	
	Gaston County Sheriff		S
Protective Response	Gaston County Emergency Management	P	
	Gaston County Board of Education		S
	Gaston County Department of Social Services		S
	Gaston County Police Department		S
	County Fire Departments		S
	Cooperative Extension		S
	Radio & Television Stations		S
	Gaston County Health Department		S
	Gaston County Division of Solid Waste		S
	Gaston County Public Works - Maintenance Division		S
Radiological Exposure Control	Gaston County Emergency Management	P	
	Cooperative Extension		S
	Gaston County Police Department		S
	County Fire Departments		S
	Gaston County Division of Solid Waste		S

	Gaston County Health Department		S
	Gaston County Public Works		S
	Gaston County Sheriff's Department		S
	Gastonia Fire Haz-Mat	P	

Figure 4
Emergency Classification and Protective Response Examples

EMERGENCY CLASSIFICATION	PROTECTIVE RESPONSE ACTIONS
<p>UNUSUAL EVENT The least serious of the four classifications. It means that a minor event – either operational or security – has occurred at the station. Unusual events pose no threat to the public safety, but due to strict federal regulations warrant an increase awareness by the plant operator and off-site emergency response agencies. No release of radioactive material is expected.</p>	<ol style="list-style-type: none"> 1. Notify needed persons on Key Alert List as appropriate. 2. Stand by until EAL degrades or escalate.
<p>ALERT In this classification, an event – either operational or security based – has occurred that would reduce the plant's level of safety. Although there would be no threat to the public safety, county and state officials and the plant operator would prepare emergency operation centers in case the situation worsens. Any radioactive release associated with the event would be minimal</p>	<ol style="list-style-type: none"> 1. Notify persons on Key Alert Lists. 2. Activate EOC as appropriate; alert key emergency personnel to standby status. 3. Maintain status until closeout, or escalation to a more severe emergency class.
<p>SITE AREA EMERGENCY This classification means an event has occurred in which major safety equipment has failed or is likely to fail, or a security event has occurred in an area where the reactor and /or equipment used to safety shut down the reactors are located. The sirens could be sounded. The public should listen to the Emergency Alert System (EAS) for information and instructions. Any release of radioactive materials would be expected to stay within strict federal guidelines.</p>	<ol style="list-style-type: none"> 1. Notify key persons on Key Alert Lists. 2. May activate siren system, EAS, tone alert radios and provide public information. 3. Assemble personnel for siren back-up and, mobile/route alerting. 4. Fully activate County EOC. 5. Alert personnel to standby for possible evacuation. 6. Maintain status until closeout, reduction of class or escalation to a more severe emergency class.
<p>GENERAL EMERGENCY The most serious of the four classifications. It means that an event has occurred in which actual or imminent fuel damage is likely, or a security event has resulted in a loss of physical station control. State and local authorities would take action to protect the public. The Emergency Alert System (EAS) would give information and instructions for people in the affected areas. Any release of radioactive materials associated with the event could exceed strict federal guidelines.</p>	<ol style="list-style-type: none"> 1. May activate siren system, EAS, tone alert radios and mobile / route alert warning systems. 2. Consider sheltering and/or evacuating based on the protective action recommendations. 3. Maintain status until closeout, reduction of class or escalation to a more severe emergency class.

--	--

Figure 5
McGuire Nuclear Station 10 mile EPZ Map



(click on the image for a larger view - opens in a new window)

Figure 6
McGuire Nuclear Station Zone Warning Responsibility

ZONE WARNING	
Gaston County assigns this function based on failure of siren(s) locations. Law Enforcement and Fire Department in area where failure has occurred will be notified and given instructions of area that needs to be covered for back-up route alerting.	
Primary Responsible Agency	Sheriff Department / Station 31 assist
	# 28 Killian Road near County Line
	# 37 Stanley Lucia Rd and Rutledge Rd (may overlap w/Station 20 and/or 30)
	# 48 Highway 16 next to Castena Pres. Church
	# 50 Highway 16 and Highway 273 (may overlap w/Station 34)
	# 40 One siren located in Meck. Co. overlaps into Gaston in the Horseshoe Bend section. If failure of this siren, we have to cover notification.
Primary Responsible Agency	Sheriff Department / Station 20 assist
	# 18 Alexis Lucia Road near Highway 27
	# 19 Mariposa Road and Alexis Lucia Road
Primary Responsible Agency	Sheriff Department / Station 30 assist
	# 38 Old 27 Highway and Lowland Dairy Road (may overlap w/Station 31 and/or 34)
Primary Responsible Agency	Sheriff Department / Mt. Holly Police and Station 34 assist
	# 39 Behind Mt. Holly First Methodist Church
	# 52 Highway 273 above Freightliner Truck Plant (may overlap w/Station 30 and 31)
Primary Responsible Agency	Sheriff Department / Stanley Police and Station 22 assist
	# 36 Highway 27 and Stanley Lucia Road (may overlap w/Station 30 and/or 31)
Available Additional Units	Gaston County Police available for assisting with Backup Route Notification if additional units are needed.

Figure 7
Catawba Nuclear Station 10 mile EPZ map

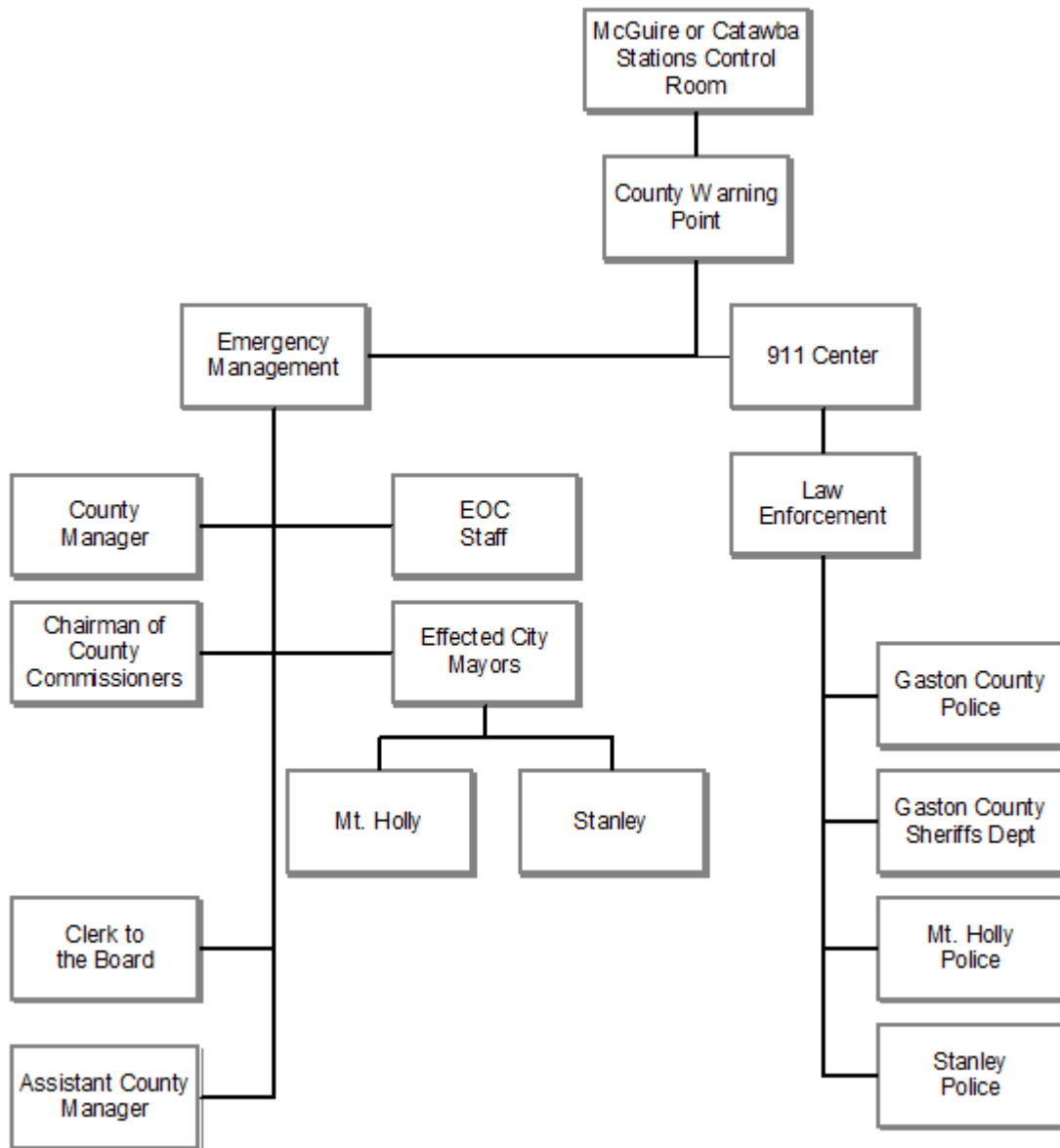


(click on the image for a larger view - opens in a new window)

Figure 8
Catawba Nuclear Station Zone Warning Responsibility

ZONE WARNING	
Gaston County assigns this function based on failure of siren(s) locations. Law Enforcement and Fire Department in area where failure has occurred will be notified and given instructions of area that needs to be covered for back-up route alerting.	
Primary Responsible Agency	Sheriff Department / Station 50 assist
	# 29 Highway 279 @ Seven Oaks Bridge
	# 30 Ratchford Road and Union New Hope Road
	# 67 New Hope VFD
Primary Responsible Agency	Sheriff Department / Station 51 assist
	# 31 Highway 274 at Carolina Speedway
	# 33 Meeks Road @ State Line
Primary Responsible Agency	Sheriff Department / Station 42 assist
	# 28 Lower Armstrong Road near South Point Road
Available Additional Units	Gaston County Police available for assisting with Backup Route Notification if additional units are needed.

Figure 9
Gaston County Key Alert Notification Chart



All emergency action level messages for an Alert, Site Area Emergency, or General Emergency to each office or agency noted on the Key Alert List. The Notification of an Unusual Event to all persons or agencies on the Key Alert List is at the discretion of Gaston County. Pagers and or telephone will be the primary means of passing this information.

**Figure 10
Evacuation Schools**

Students may be evacuated by county school buses to a pre-designated shelter outside the 10-mile EPZ.

MCGUIRE NUCLEAR STATION - SCHOOLS	
Schools	Zone
O.L. Kiser Elementary	S
Mt. Holly Middle School	S
Pinewood Elementary	S
Ida Rankin Elementary	S
Springfield Elementary	S
Stanley Middle School	S
Stanley Christian Academy (private school)S
Mt. Island Charter School (new 8/2010)R
CATAWBA NUCLEAR STATION - SCHOOLS	
Schools	Zone
W. A. Bess Elementary	F-3
Forestview High School	F-3

**Attachment 1 to Part 2, Section 4
Authorities, References and Agreements**

This Attachment lists Authorities, References and Agreements by title with other organizations and government jurisdictions that support this Plan.

A. Authorities and References

1. [Chapter 166A, of the North Carolina General Statutes.](#)
2. [Gaston County State of Emergency Ordinance.](#)
3. [Gaston County Emergency Operations Plan for Multi-Hazards.](#)
4. Duke Energy Company McGuire and Catawba Emergency Plan

B. Letters of Agreement (Copies on File with Emergency Management)

1. Gaston County Emergency Management and Duke Energy Company.
2. [Gaston County State of Emergency Ordinance.](#)

**Attachment 2 to Part 2, Section 4
Supporting Plans and Their Sources**

This Attachment lists plans that support Gaston County procedures to Support this Plan.

A. Plan Sources

1. North Carolina State Multi Hazard Plan
North Carolina Division of Emergency Management
2. Gaston County Emergency Operations Plan for Multi-Hazards
Gaston County Emergency Management Department
3. Duke Energy Company McGuire & Catawba Emergency Plan
Duke Energy Company

B. Implementing Plans

Standard Operating Procedures	Sources	Section of Plan Implemented
Emergency Operations Center	Gaston County Emergency Management	All Sections
Public Notification	Gaston County Emergency Management	IV Annex E
Special Transportation	Gaston County Emergency Management	IV.E.8
Training	Gaston County Emergency Management	VII.C
Potassium Iodide Distribution	Gaston County Emergency Management	IV.E.5.6.7.
Shelter Management	Gaston County Emergency Management	III.I.L.M.T.

Attachment 3 to Part 2, Section 4
Inventory of Emergency Equipment

The Gaston County Emergency Management Office has access to various emergency equipment located throughout the county and in the Emergency Operations Center to support the McGuire or Catawba Nuclear Site in the event of an emergency. This equipment includes protective equipment, communications equipment, radiation monitoring equipment and emergency supplies. An inventory of emergency equipment which supports the Gaston County Plan is maintained by the Gaston County Emergency Management Office.

