

GASTON COUNTY, NC

SECURITY ROAD BLOCKS GUIDANCE

**This guidance can be altered and modified when
needed for specific conditions and situation**

**In support of North Carolina Emergency Response Plans
for Catawba and McGuire Nuclear Sites**

**On line edition of guidance is current
for the nuclear plan**

Prepared by:

Gaston County Office of Emergency Management

THIS PAGE LEFT BLANK

I. PURPOSE

The purpose of this guidance's to provide general guide lines to law enforcement officials concerning traffic control and security within the Emergency Protection Zone (EPZ) for the Catawba and McGuire Nuclear Power Stations (CNS and MNS).

II. SCOPE

This guidance will cover the CNS and MNS affected areas and will provide general guidance associated with Security Road Blocks (SRB).

A. The term security roadblock is used to control evacuation traffic flow and to control access to evacuated areas.

III. OBJECTIVES

A. The primary objectives of this function are as follows:

1. To provide directions to reception and congregate care centers for persons being evacuated as well as Emergency Alert Station (EAS) radio numbers.
2. To assist in traffic control and eliminate impediments to the flow of evacuation traffic.
3. To restrict access to evacuated areas.
4. To enforce all normal laws associated with traffic conditions and with violations of local, state, and federal laws as outlined by existing or emergency regulations.
5. To assist the decontamination stations in traffic control, and in possible crowd control.
 - a. Traffic control and access control points are NOT monitoring stations and are NOT to be considered monitoring stations by state or federal agencies/departments. The only monitoring instruments should be dosimeter for individual protection.
6. To perform other duties as directed by local Emergency Operations Center (EOC) authorities.

IV. IMPLEMENTING PROCEDURES

A. The following information or implementing actions, both general and specific, should be common knowledge to law enforcement personnel assigned to man a security roadblock for either CNS or MNS.

1. Each SRB location will be manned at all times by designated law enforcement personnel. Each location should consist of, but not limited to, the following:
 - a. One car with radio communication.
 - b. One officer with walkie-talkie communication.
 - c. Signs or barricades as needed.
2. Use radio communication to report arrival to location and to secure location each time unit is dispatched.
 - a. Report obstacles that will delay or impede the evacuation.
 - b. Request additional resources when needed.
3. Have a clear understanding of concept of operation. (See Basic Plan for CNS and MNS).
4. Have an understanding of when local government has command and control of operations and when this command and control is shifted to the state.
5. Direct all questions through normal chain of command or direct questions to EOC for clarification.
6. Each location should give hourly reports through normal channels. Special or conditional reports can be made at any time.
7. Self protection dosimeter instruments should be assessed at thirty-minute intervals, or as instructed.
8. The shelter facilities for Gaston County are:
 - Catawba area residents: Stuart Cramer High School
 - McGuire area residents: Stuart Cramer High School

B. Radiation protection at traffic control and access control points will be primarily by use of dosimeter. The below listing will provide the basics concerning radiation protection and dosimeter.

1. Personnel staffing traffic control and access control points are considered emergency workers.
2. Emergency workers are assigned to categories 1, 2, or 3 and ***limited to nonpregnant adults***.
 - a. Category 1 = Emergency worker assignment.

- b. Category 2 = Potentially high exposure rate (greater than .1 roentgens per hour) inside the EPZ.
 - c. Category 3 = Areas outside the EPZ (less than .1 roentgens per hour)
3. Due to the nature of the assignment, all traffic control and security roadblock staff will be considered in category 1 and 2.
 4. Radiation exposure limits for emergency workers will not exceed the turn back limit of 2.5R for all activity; 5R for protecting valuable property; 5R for life-saving activity.
 5. All traffic control staff will be issued proper dosimeter prior to reporting to their post.
 - a. One TLD worn on the collar.
 - b. One 0-20R or 0-5R direct reading dosimeter attached to the shirt pocket.
 - (1) Self-reading pocket dosimeters and Thermoluminescent dosimeters (TLD's) should be worn on the front of the body between the neck and waist. A recommended location is the left breast pocket unless prohibited by protective clothing.
 - (2) Self-reading pocket dosimeters should normally be worn outside the person's clothing, including protective clothing, in order to have easy access for reading dosimeters.
 - (3) The TLD should normally be worn on the first layer of clothing. Do not wear the TLD outside protective clothing such as turn-out gear or coveralls.
 - (4) The TLD will be worn such that the front side is facing away from the body. The company name and serial number will be printed on the front side. The TLD should be attached with the spring loaded clip in such a manner to secure the TLD during normal work activities.
 - (5) The TLD will be assigned to an emergency worker for the duration of the radiation incident or until a switch out for a new TLD is recommended by the appropriate agency. The transfer of a TLD to another emergency worker is prohibited.
 6. KI (potassium iodide) is recommended to be issued to the emergency workers if there is any likelihood that radioiodine is or will be released in the accident.
 - a. The decision to issue KI will come from the EOC.

- b. The decision to take KI is on a voluntary basis.
7. All emergency workers must maintain accurate records concerning radiation exposure control.
- a. Personal dose record card.
 - b. Dosimeter log sheet.
 - c. Records will be maintained by control point officer of all person(s) who enter the EPZ to carry out a justifiable, authorized mission.
8. Each person who enters the EPZ after an area is secured should carry a proper dosimeter to record exposure, or be escorted by an emergency worker with the proper dosimeter.

SECURITY ROAD BLOCKS QUICK CHECK LIST

1. Direct and control traffic flow **out** of evacuated areas.
2. Restrict access to evacuated areas.
3. Have a security roadblock re-entry log sheet available.
4. Control, eliminate, and remove traffic impediments.
5. Maintain communications with the Emergency Operations Center (EOC) to provide information and receive instructions.
6. Advise citizens to tune to the Emergency Alerting System (EAS) radio station 107.9 FM.
7. Check in every hour with the EOC.
8. Direct questions or problems that cannot be solved to the EOC.
9. Wear the proper radiation protective (monitoring) equipment:
 - a. Wear the TLD on your shirt collar.
 - b. Wear a 0-20R or 0-5R dosimeter on outside shirt pocket
 - c. Properly filled out dosimeter dose cards
10. Have an issue of potassium iodide (KI) with you but only use it when instructed to do so.
11. Read the dosimeters every 30 minutes. If the exposure exceeds 1R notify your supervisor.
12. Report to Emergency turn-back exposure is 2.5R to your supervisor and, unless otherwise directed, leave the contaminated area.
13. Mission dose by special approval through the EOC may reach up to 5R.
14. Any exposure over 5R for lifesaving only and is a strictly voluntary exposure after consulting with the EOC.

INSTRUCTIONS FOR STAFFING SECURITY ROAD BLOCKS

1. Security road blocks are assigned by road name and state road number.
2. Upon arrival at your assigned post, the following must be accomplished:
 - a. Report to the EOC representative by radio or telephone.
 - b. Charge your self-reading dosimeters and fill out a personal dose record card.
 - c. Place one of the following on the front outside shirt or jacket pocket:
 - (1) 0-20R or 0-5R dosimeter
 - d. Place the Thermoluminescent (TLD) dosimeter on the shirt collar closest to the inner clothing.
 - e. Place the supply of potassium iodide in a secure place that allows easy access.
3. Place your vehicle in a position that will *restricts access into* the EPZ but *permits vehicles to leave*.
4. Access into the EPZ after evacuation will be by an authorization permit issued through the EOC.
5. Any person re-entering the EPZ must have proper dosimeter issued with a dose record card. (This will be issued with the authorization pass at the EOC.)
6. All persons re-entering the EPZ must be logged in at the security roadblock entry point and logged out when leaving.
7. All persons leaving the EPZ will be directed to the monitoring station at a designated shelter location.
8. Security roadblock personnel should read the pocket dosimeter every 30 minutes. If the reading exceeds 1R, notify the EOC and wait for instructions.
9. The turn back value for exposure is 2.5R. Do not exceed this limit. Call the EOC immediately if this limit is reached.
10. Potassium iodide should be taken **ONLY** at the direction of the EOC Health Department official. (This is a voluntary decision by each emergency worker.)
11. Do not leave your assigned security roadblock unless advised to do so by the EOC representative or officially relieved by another law enforcement officer.
12. Advise the EOC when you leave or secure your location then **report directly to the Emergency Worker Decon site for monitoring**.

HOW TO USE A SELF-READING POCKET DOSIMETER

0-20R or 0-5R

All kits now contain a pistol style charger and instructions for operating are included in the kit.

1. Fill out a personal dose card and list the serial number of the dosimeter you are using. Record the initial reading of the dosimeter on the dose card before entering the radiation area.
2. Also complete a self-reading dosimeter log sheet.
3. Place the dosimeter on your outside clothing.
4. Read each 30 minutes; if movement is indicated, read each 10-15 minutes.
5. If the accumulated exposure exceeds 1R, notify your supervisor and wait for instructions.
6. If the reading is off-scale for any dosimeter, record the reading on the dose card, notify your supervisor, zero the dosimeter, and wait for instructions from your supervisor or the EOC.
7. RADIATION EXPOSURE LIMITS - EMERGENCY ONLY TURN-BACK VALUE - 5R
8. MISSION DOSE-VARIABLE-INCIDENT DEPENDENT BY SPECIAL APPROVAL:
UP TO 5R VOLUNTARY ONLY FOR LIFESAVING OR PROTECTION OF LARGE POPULATION: > 5R
9. Notify your supervisor of each increase in your accumulated exposure at end of the work shift or as directed.

DOSIMETER RECORD KEEPING

AT END OF SHIFT:

1. Read dosimeter.
2. RECORD date, time, and actual reading.
3. SUBTRACT initial reading from final reading.
4. RECORD the resultant exposure.
5. ADD this exposure to accumulated exposure.
6. RECORD the accumulated exposures.
7. COMPARE to guides and limits.

8. CHARGE dosimeter.
9. COMPLETE any record forms and keep PERSONAL EXPOSURE RECORD.

THERMOLUMINESCENT DOSIMETER

TLD's will be distributed to emergency workers by the Gaston Emergency Management Office. TLD's will be returned to the Gaston Emergency Management Office at the conclusion of the incident. TLD's will be read and dose levels analyzed by the North Carolina Division of Radiation Protection.

- a. Wear the self-reading dosimeter and TLD on the front of the body between the neck and waist (i.e., left breast pocket unless prohibited by protective clothing).
- b. Wear the self-reading dosimeter on outside clothing, including protective clothing, to allow easy access for reading dosimeters.
- c. Wear TLD on the first layer of clothing. The TLD should not be worn outside protective clothing (i.e., Tyvek coveralls).
- d. Wear TLD with front side facing away from the body. The company name and serial number will be printed on the front side. The TLD should be attached with the spring-loaded clip in such a manner to secure the TLD during normal work activities.
- e. Keep the same TLD for the duration of the radiation incident or until a switch-out for a new TLD is recommended by the appropriate agency. The transfer of a TLD to another emergency worker is prohibited.
- f. Wear a simulated TLD for exercises (i.e., pieces of paper, cardboard, plastic, etc. to simulate that portion of the emergency plan). TLD's will not be worn for exercises or drills.

POTASSIUM IODIDE INSTRUCTIONS

(KI)

KI will be distributed to emergency workers as a blocking agent for the uptake of radioactive iodine by the thyroid.

This compound has been determined to be effective in preventing long-term development of abnormalities of the human thyroid gland as a result of exposure to radioactive iodine.

KI should be taken under the following circumstances:

- a. When radioactive exposure is imminent or has actually occurred.
- b. When directed by Health officials

KI may be taken by all emergency workers except those who may be allergic to iodine salts (iodide).

Side effects to KI include:

- a. Skin rashes.
- b. Swelling of salivary glands.
- c. Iodism (metallic taste, burning mouth and throat, sore teeth and gums, symptoms of a head cold, and possibly stomach upset and diarrhea).
- d. Overactivity, underactivity, or enlargement of the thyroid gland (goiter). (This side effect is rare.)

More serious allergic reactions to KI include:

- a. Fever and joint pain.
- b. Swelling of parts of face and body.
- c. Occasionally severe shortness of breath requiring immediate medical attention.

Side effects may occur when higher doses are taken for long periods of time. Only the recommended dose should be taken.

Dose:

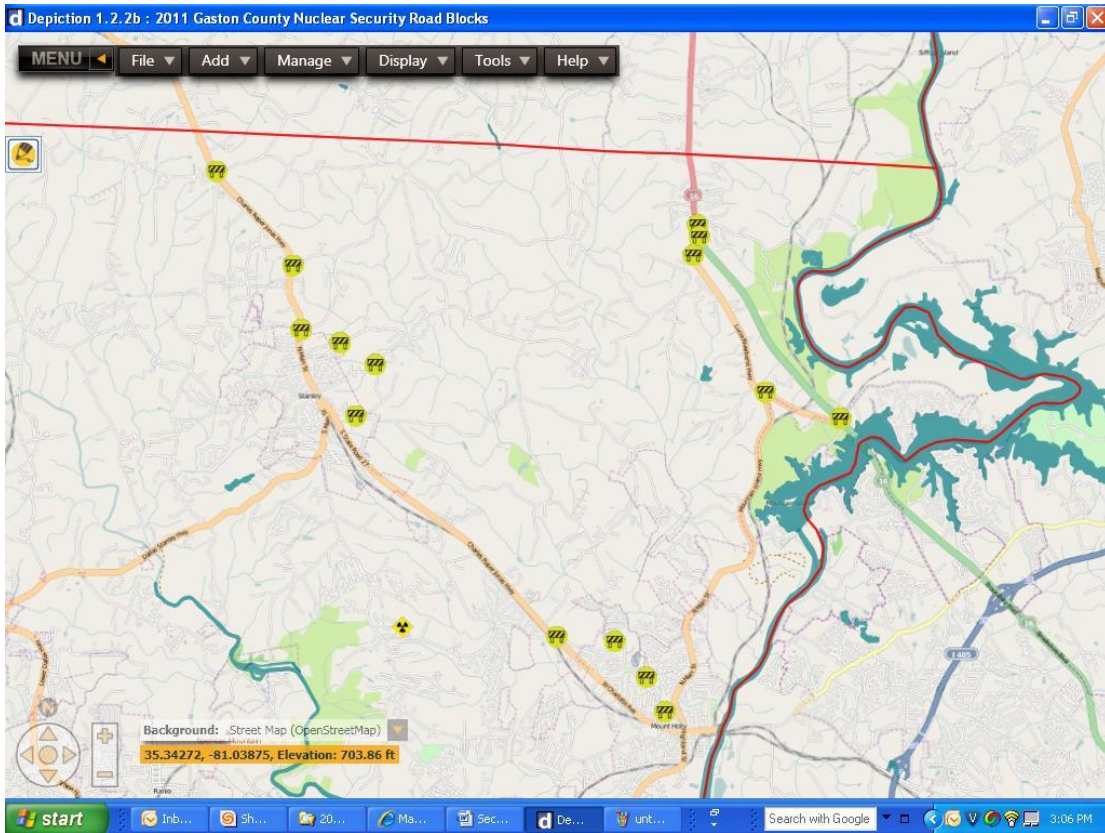
- a. KI is supplied in four (4) blister packs containing 65 mg. KI each.
- b. The dose should be two (2) tablet per day when directed.
- c. Self-administration of KI is voluntary

McGuire Security Road Blocks – REVISED 2/2011		
5 Mile Zone	Evacuation of Zone R	
MG-1	Lucia Riverbend Hwy & Killian Rd Deny traffic onto Killian Rd and Lucia Riverbend Hwy north. Direct all traffic south onto Lucia Riverbend Hwy	
MG-2	Hwy 16 and Lucia Riverbend Hwy Deny traffic north or south on Hwy 16. Direct all traffic south onto Lucia Riverbend Hwy	
MG-3	Lucia Riverbend Hwy and Stanley Lucia Rd Deny traffic south or north on Lucia Riverbend Hwy. Direct all traffic onto Stanley Lucia Rd	
MG-4	Lucia Riverbend Hwy and Hwy 273 Deny traffic north or south on Lucia Riverbend Hwy. Direct all traffic south on Hwy 273	
MG-5	Hwy 16 and Lucia Riverbend Hwy Deny traffic north on Hwy 16 or onto Horseshoe Bend Rd. Direct all traffic north onto Lucia Riverbend Hwy	

McGuire Security Road Blocks – REVISED 2/2011		
10 Mile Zone	Evacuation of Zone S	
MG-6	Hwy 27 and Alexis Lucia Rd Deny all traffic onto Alexis Lucia Rd	
MG-7	Hwy 27 and Airport Rd Deny all traffic onto Airport Rd	
MG-8	Hwy 27 and Mariposa Rd Deny all traffic onto Mariposa Rd.	
MG-9	Blacksnake Rd and Watts St Deny all traffic north on Blacksnake Rd. Direct all traffic back to Hwy 27	
MG-10	E. Chestnut St and Abernathy Rd Deny all traffic north on E. Chestnut. Direct all traffic back to Hwy 27	
MG-11	Old Mt. Holly Rd and E. Dallas Rd Deny all traffic north on Old Mt. Holly Rd. Direct all traffic back to Hwy 27	

MG-12	Noles Dr and Hwy 27 Deny all traffic onto Noles Dr. Direct traffic to Hwy 27	
MG-13	Woodlawn Ave and Craig St Deny all traffic north on Woodlawn Ave. Direct all traffic south onto Craig St	
MG-14	Woodlawn Ave and Hawthorne St Deny all traffic flow north on Woodlawn Ave. Direct all traffic south on Hawthorne St	
MG-15	N. Main and Woodlawn Ave Deny traffic north on N. Main or Woodlawn St. Direct all traffic south on Main Street	
MG-16	N. Main Street and Highland Street Deny all traffic north on N. Main. Direct all traffic south on Highland St.	

McGuire Site Emergency Worker Decontamination Site		
<u>EW DECON</u>	Stuart Cramer High School, Cramerton	Gastonia Haz Mat, Cramerton FD & GEMS/STAR

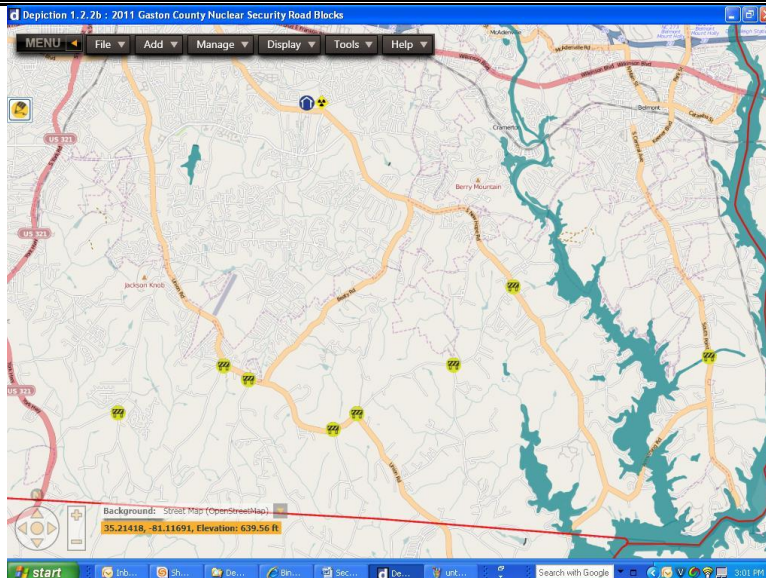


Catawba Security Road Blocks – REVISED 2/2011

10 Mile Zone	Evacuation of Zone F-3	
CG-1	South Point Rd at Canal Bridge Deny all traffic south on South Point Rd	
CG-2	S. New Hope Rd and Union-New Hope Rd Deny all traffic south on S. New Hope Rd.	
CG-3	Rufus Ratchford and Union New Hope Rd Deny all traffic south on Rufus Ratchford Rd	
CG-4	Union Road and Union-New Hope Road Deny all traffic south on Union Rd	
CG-5	Wilson Farm Road and Union Road Deny all traffic south on Wilson Farm Rd	
CG-6	Patrick Road and Union Road Deny all traffic south on Patrick Rd	
CG-7	Bud Wilson Road and Union Road Deny all traffic south on Bud Wilson Rd	
CG-8	Sparrow Dairy Road and Robinson Road Deny all traffic south on Sparrow Dairy Rd	

Catawba Site Emergency Worker Decontamination Site

<u>EW DECON</u>	Stuart Cramer High School, Cramerton	Gastonia Haz Mat, Cramerton FD & GEMS/STAR
-----------------	--------------------------------------	---



EVACUATION AREA
RE-ENTRY PASS NUMBER _____

Name		Driver's License
Address		SSN
Telephone #	Emergency Contact	
Vehicle Type	License Number	
AUTHORIZED RE-ENTRY		
Destination		
From	Date	Time
TO	Date	Time
RE-ENTRY AUTHORIZED BY		
Health Department		Date/Time
Law Enforcement		Date/Time
EOC Manager		Date/Time
SECURITY ROADBLOCK		
Each person entering a secured zone must report to the monitoring station immediately after exiting the zone.		
Entry Location		Officer on Duty
Date/Time entered		Date/Time exited
MONITORING STATION		
Date arrived		Time Arrived
Monitoring Results		
Release this form to the manager at the Monitoring Station		

EVACUATION AREA RE-ENTRY LOG

Name	Pass #	Destination	In	Out

TUNE CAR
RADIO TO
FM 107.9